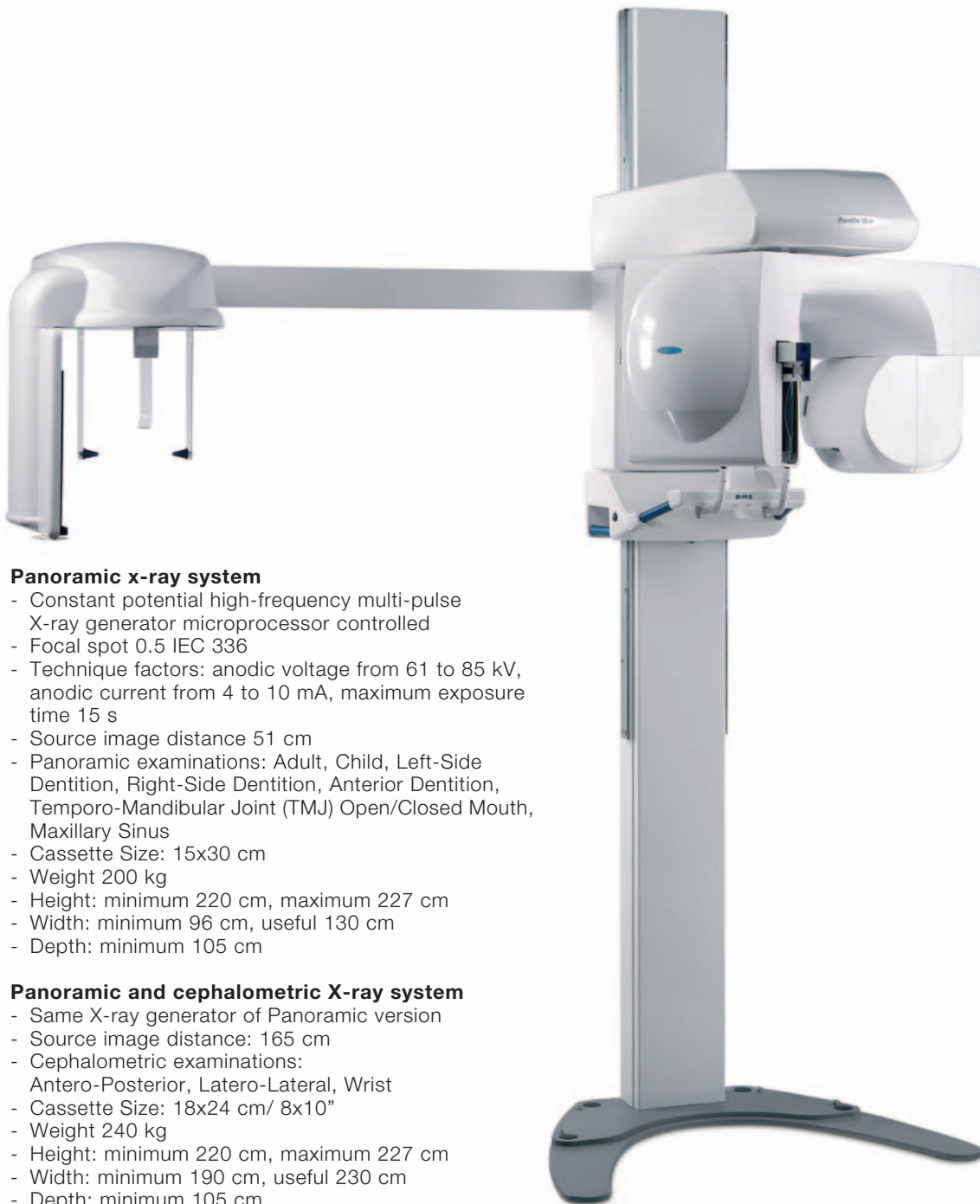




**PantOs 16 *XP***

**BLUEx**



#### **Panoramic x-ray system**

- Constant potential high-frequency multi-pulse X-ray generator microprocessor controlled
- Focal spot 0.5 IEC 336
- Technique factors: anodic voltage from 61 to 85 kV, anodic current from 4 to 10 mA, maximum exposure time 15 s
- Source image distance 51 cm
- Panoramic examinations: Adult, Child, Left-Side Dentition, Right-Side Dentition, Anterior Dentition, Temporo-Mandibular Joint (TMJ) Open/Closed Mouth, Maxillary Sinus
- Cassette Size: 15x30 cm
- Weight 200 kg
- Height: minimum 220 cm, maximum 227 cm
- Width: minimum 96 cm, useful 130 cm
- Depth: minimum 105 cm

#### **Panoramic and cephalometric X-ray system**

- Same X-ray generator of Panoramic version
- Source image distance: 165 cm
- Cephalometric examinations: Antero-Posterior, Latero-Lateral, Wrist
- Cassette Size: 18x24 cm/ 8x10"
- Weight 240 kg
- Height: minimum 220 cm, maximum 227 cm
- Width: minimum 190 cm, useful 230 cm
- Depth: minimum 105 cm

# **BLUEX**

**Blue X Imaging Srl**

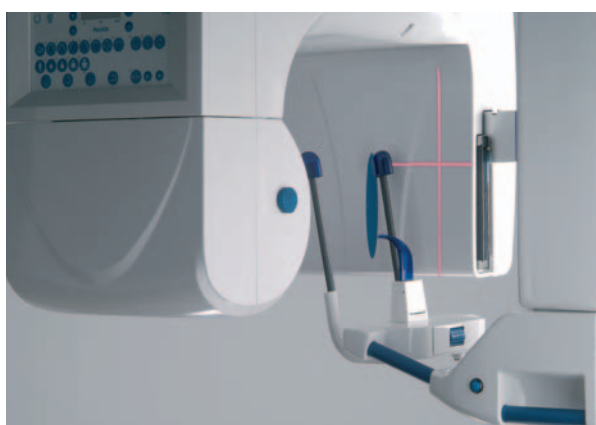
Via Idiomi 1/8-33 • 20090 Assago • Italy  
 Phone +39 02 4571 2171 • Fax +39 02 4570 3385  
 e-mail: [bluex@bluex.it](mailto:bluex@bluex.it) • [www.bluex.it](http://www.bluex.it)

# PantOs 16 *XP*

PROFESSIONAL TECHNOLOGY

Blue X Imaging has a vast experience in manufacturing of dental radiographic systems. Products such as IntraOs 70, PantOs 16 e PantOs DG are well known and appreciated at worldwide level.

PantOs 16 xp and PantOs DG xp are newly designed systems based on advanced radiological technologies



## Operations

Precision alignment is done with patient still by means of 3 laser beams and a motorized system for carriage translation.

Positioning tools include bite block and auxiliary chin rest. Temporal resting bars are available on request (optional extra).

The frontal mirror can be angled.

A pushbutton unlocks the brakes of the vertical movement. The overall structure is compact. A self-standing base is available too (optional extra).

## Radiology

The X-ray generator features constant potential with high frequency electronics.

The imparted dose is optimized during the exposure.

A thermal protection minimizes the waiting time.

Combined movements of rotation and translation of the carriage are program controlled.



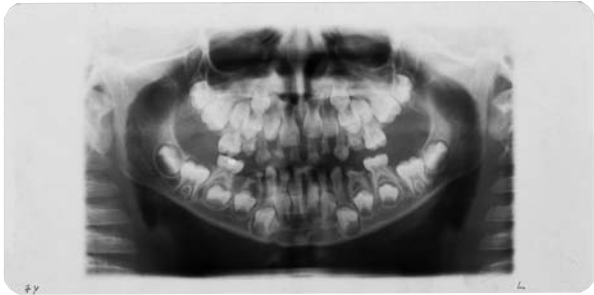
## Cephalometric procedures

The cephalometric version is available with lateral arm to take side (LL, Latero-Lateral) or frontal (AP, Antero-Posterior) radiographs of the skull, and wrist, for orthodontic procedures.

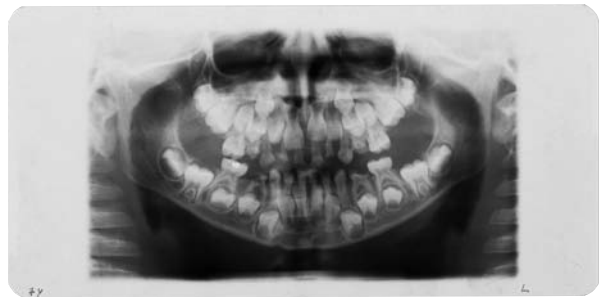
A soft tissue filter is available with LL procedures.

Adaptation of the system to teleradiography is done by means of rotation the tube-head in favour of the cephalostat, and selection of proper beam collimating window.

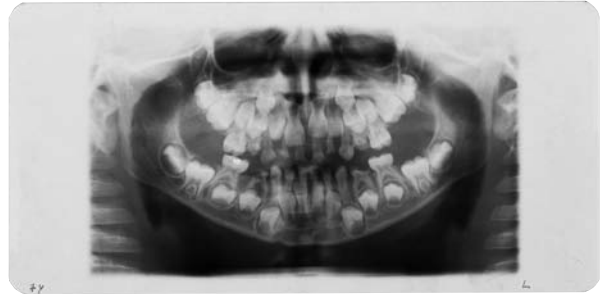




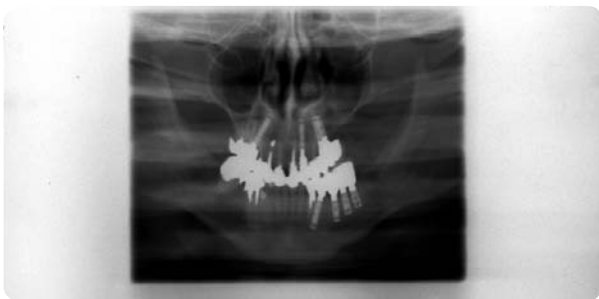
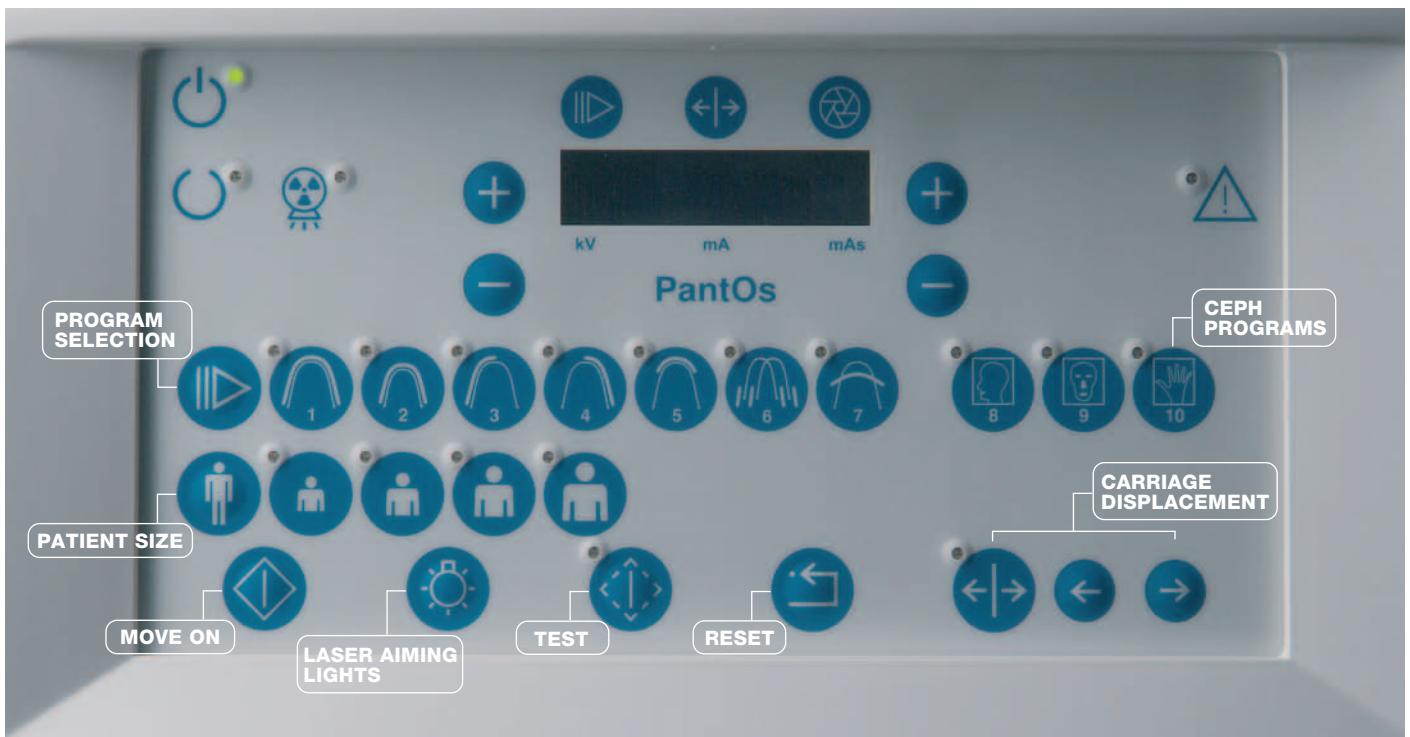
Standard projection



Child projection



Frontal dentition



Sinus projection

**Control**

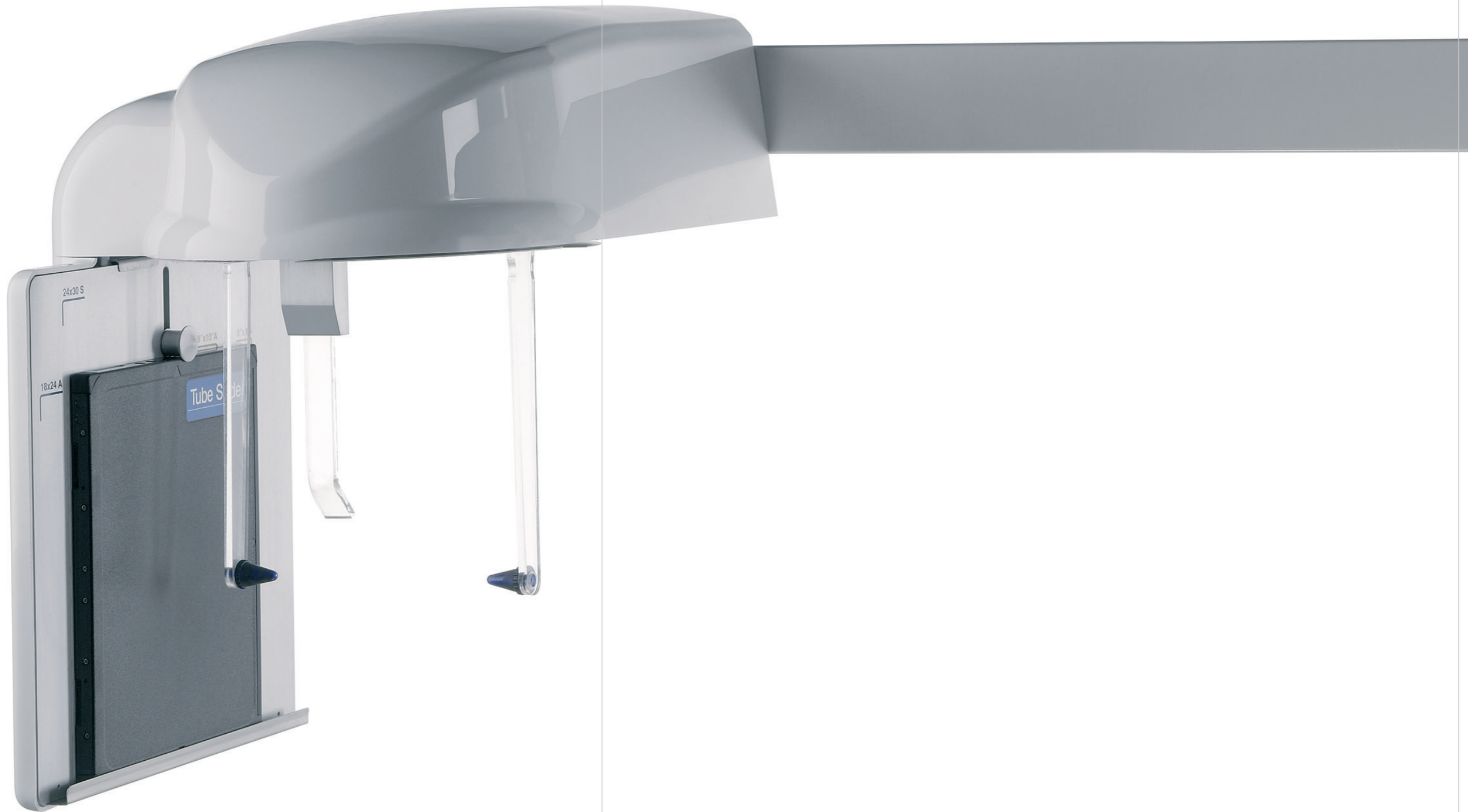
Symbols are available for immediate set-up. 7 types of panoramic examinations and 3 for ceph, both combining 4 patient's sizes. Technique factors, automatically provided by selection of examination and size of patient, can be adjusted if desired.



TMJ open and closed mouth

# PantOs 16 XP

PROFESSIONAL TECHNOLOGY



PantOs 16 *XP*

BLUEx

